

Applies To: **2006–07 Civic 2-Door** – ALL Except Si and Honda Accessory HFP Package  
**Civic 4-Door** – ALL Except Si

**January 22, 2008**

## Uneven or Rapid Rear Tire Wear

**NOTE:** To ensure a proper repair and proper reimbursement, you must read this entire service bulletin before doing any work.

### SYMPTOM

The customer may complain of uneven or rapid rear tire wear, a roaring noise from the rear, and/or a vibration at highway speeds.

### PROBABLE CAUSE

The combination of the tires and the rear suspension geometry may cause rapid and uneven rear tire wear. Tires in an advanced stage of this diagonal or inner edge wear may cause vibration and/or a bad bearing type noise. (For more details, see TIRE INSPECTION AND QUALIFICATION on page 2).

### CORRECTIVE ACTION

Install a rear upper control arm kit, replace the flange bolts, replace the worn tires (see the Tire Replacement Information chart on this page), and do a four-wheel alignment.

### PARTS INFORMATION

- Rear Upper Control Arm Kit:  
P/N 04523-SNA-A00, H/C 8820698
- Bolt, flange (four required):  
P/N 90397-SNA-A00, H/C 8481012
- Bolt, flange (two required):  
P/N 90396-SNA-000, H/C 8178576

### Tire Warranty Information

You *must* use the same brand and size tire as OEM equipped. Replacement tires must be from The Tire Rack.

For replacement tires, call the American Honda Tire Program through The Tire Rack at **(877) 327-8473**.

### Tire Application Chart

OEM Tire, P/N, and H/C	Tire Size	Trim
Dunlop SP5000 P/N 42751-DUN-038 H/C 8285082	P195/65R15	4-Door DX, GX, Hybrid
Bridgestone Turanza EL400 P/N 42751-BRI-090 H/C 8285108	P195/65R15	4-Door GX, Hybrid
Bridgestone Turanza EL400 P/N 42751-BRI-089 H/C 8251878	P205/55R16	2-Door LX, EX, 4-Door LX, EX
Goodyear Eagle RSA P/N 42751-GYR-036 H/C 8270498	P205/55R16	4-Door LX, EX

### Tire Replacement Information

American Honda will pay a prorated amount as shown in the chart below for replacement of tires due to uneven or rapid rear tire wear, based on the vehicle's mileage.

Miles	Tread Depth						
	0/32"	1/32"	2/32"	3/32"	4/32"	5/32"	6/32" or more
0-3,500	100%	100%	100%	75%	50%	50%	0%
3,501-6,500	100%	100%	100%	75%	50%	50%	0%
6,501-9,500	100%	100%	100%	75%	50%	25%	0%
9,501-12,500	75%	75%	75%	50%	50%	0%	0%
12,501-15,500	75%	75%	75%	50%	25%	0%	0%
15,501-18,750	50%	50%	50%	50%	25%	0%	0%
18,751-21,750	25%	25%	25%	0%	0%	0%	0%
21,751-25,000	25%	25%	25%	0%	0%	0%	0%
over 25,000	0%	0%	0%	0%	0%	0%	0%

	Abnormal Wear (% Covered by Honda)
	Normal Wear (No Coverage by Honda)

**NOTE:** You must calculate how much to charge the customer and how much to charge the warranty claim. You must get the customer's permission before proceeding with this repair.

To qualify for tire replacement:

- The tires must have been properly maintained (correct inflation and balancing).
- Tires must not show signs of abuse (such as from racing or other physical damage). Abused tires are not covered by this service bulletin.
- Tires must show signs of diagonal or inner edge wear and fall within the abnormal wear range, based on tread depth measured and mileage shown on the Tire Replacement Information chart on page 1.

## TIRE INSPECTION AND QUALIFICATION

### Diagonal Wear Lines

The tire is no longer round. There are high and low spots on the tire, worn in a diagonal pattern across the tread.



The tread is worn diagonally across the tire.

### Inner Edge Tread Wear

The tread on the inner edge of the tire is worn more than the tread on the outer edge.

OUTER

INNER



OUTER

INNER



## WARRANTY CLAIM INFORMATION

**In warranty:** The normal warranty applies.

OP#	Description	FRT
4191B6	Install rear upper control arm kit.	0.5
421112	Mount, balance, and install two tires.	0.8
421114	Mount, balance, and install four tires.	1.6
4191B6B	Do a four-wheel alignment.	1.2

Failed Part: P/N 04523-SNA-A000  
H/C 8820698

Defect Code: 00504

Symptom Code: 04217

Skill Level: Repair Technician

**Out of warranty:** Any repair performed after warranty expiration may be eligible for goodwill consideration by the District Parts and Service Manager or your Zone Office. You must request consideration, and get a decision, before starting work.

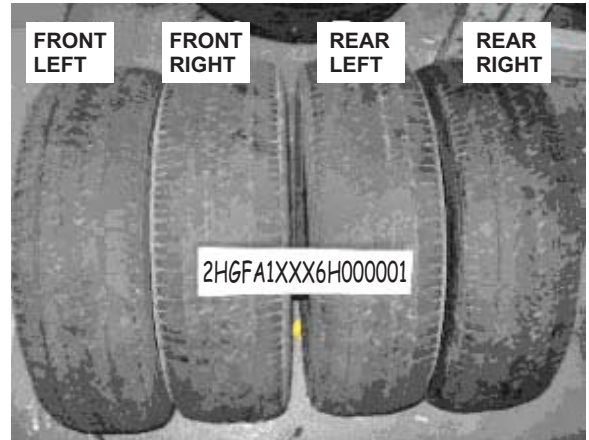
To claim the installation of replacement tires, do this:

- List the tire invoice price in the first sublet field on the warranty claim form. Use *sublet code T3 (sublet tire purchase)*.
- You are eligible for a reimbursement of \$20 per tire for handling. This \$20 handling fee should cover any state-required recycling fees plus an additional profit margin. List this dollar amount in the second sublet field on the warranty claim form. Use *sublet code T4 (sublet tire purchase handling reimbursement)*.

**NOTE:** Claims made for tire replacement for wear caused by this condition require three photographs of the tires, all attached to the repair order. If these photos are not available upon request or if they fail to meet the guidelines in this service bulletin, the dealer will be debited the full claim amount.

## Photo #1

Arrange the tires together, and take a photo showing the tread wear of all replaced tires and the VIN of the vehicle, as shown in the example below. (If only two tires are replaced, photograph only those two tires.)



## Photo #2

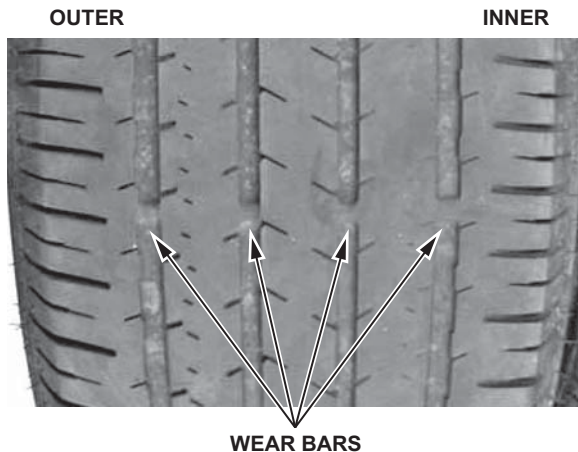
Set the camera to macro mode (close-up), and select the tire with the most tread wear. Measure the tread depth of the tire at one of the grooves closest to the middle of the tire, and take a photo of the gauge in the tire clearly showing the remaining tread depth. If the inner edge of the tire is bald or flat-spotted, yet the tread in the center of the tire is good, make sure the photo clearly shows that the tire is past its useable life.



MIDDLE OF THE TIRE

### Photo #3

Select the tire with the most tread wear, and take a photo of the tread surface showing the tread wear bars.



### DIAGNOSIS

1. Make sure the vehicle's suspension is not modified, and that it has the correct tires and wheels. (See the Tire Application Chart on page 1 for the correct tires).

*Are the tires and wheels the correct type?*

**Yes** - Go to step 2.

**No** - Disregard this service bulletin, and continue with normal troubleshooting (accident damage, driving habits, alignment, tire pressures, etc.).

2. Inspect the rear upper control arms.

*Do the arms have the letter "C" painted or stamped on them?*

**Yes** - This vehicle already has the revised rear upper control arms. Disregard this service bulletin, and continue with normal troubleshooting (accident damage, driving habits, alignment, tire pressures, etc.).

**No** - Go to step 3.

THE LETTER "C"



3. Inspect the tires.

*Do the tires show diagonal or inner edge wear?*

**Yes** - Go to REPAIR PROCEDURE.

**No** - The wear is not camber related. Disregard this service bulletin, and continue with normal troubleshooting (accident damage, driving habits, alignment, tire pressures, etc.).

### REPAIR PROCEDURE

1. Install a rear upper control arm kit, and replace the flange bolts:

- Refer to page 18-39 of the *2006–2008 Civic Service Manual, Volume 2*, or
- Online, enter keyword **UPPER**, then select **Rear Upper Arm Removal/Installation** from the list.

NOTE: This procedure is not complete unless you replace the flange bolts.

2. Measure and record the tread depth of the tires on the repair order using a tread depth gauge. Tread depth is measured at one of the grooves closest to the middle of the tire, from the top of the tread blocks to the bottom of the groove (not to the wear bars). If the inner edge of the tire is worn to the point where it is heavily flat-spotted or bald, use a value of 2/32 inches instead of the actual tread depth, to determine the prorated amount on the Tire Replacement Information chart on page 1. (See Photos #1, #2, and #3 on pages 3 and 4).



3. To determine the quantity of tires that require replacement, use the Tire Replacement Information chart on page 1. The chart also lists the percentage that American Honda pays.

- If three or four tires have abnormal wear, mount, balance, and install four new tires.
- If one or two tires have abnormal wear, mount, balance, and install two new tires onto the rear of the vehicle.

4. Set the tire pressures to the specifications on the driver's doorjamb (B-pillar) label.

5. Do a four-wheel alignment using the new rear camber specification below:

**Rear camber: - 0 degrees 45' +/- 45'**

**Front toe: 0 mm (+2mm/-2mm)**

**Rear toe: 2 mm (+2mm/-1mm)**